

# Introduction to OCTAM TRANPLAN 3.4

# Contents

- Training Design
- OCTAM
  - Model Inputs
  - Model Function
  - Model Outputs
- Discussion

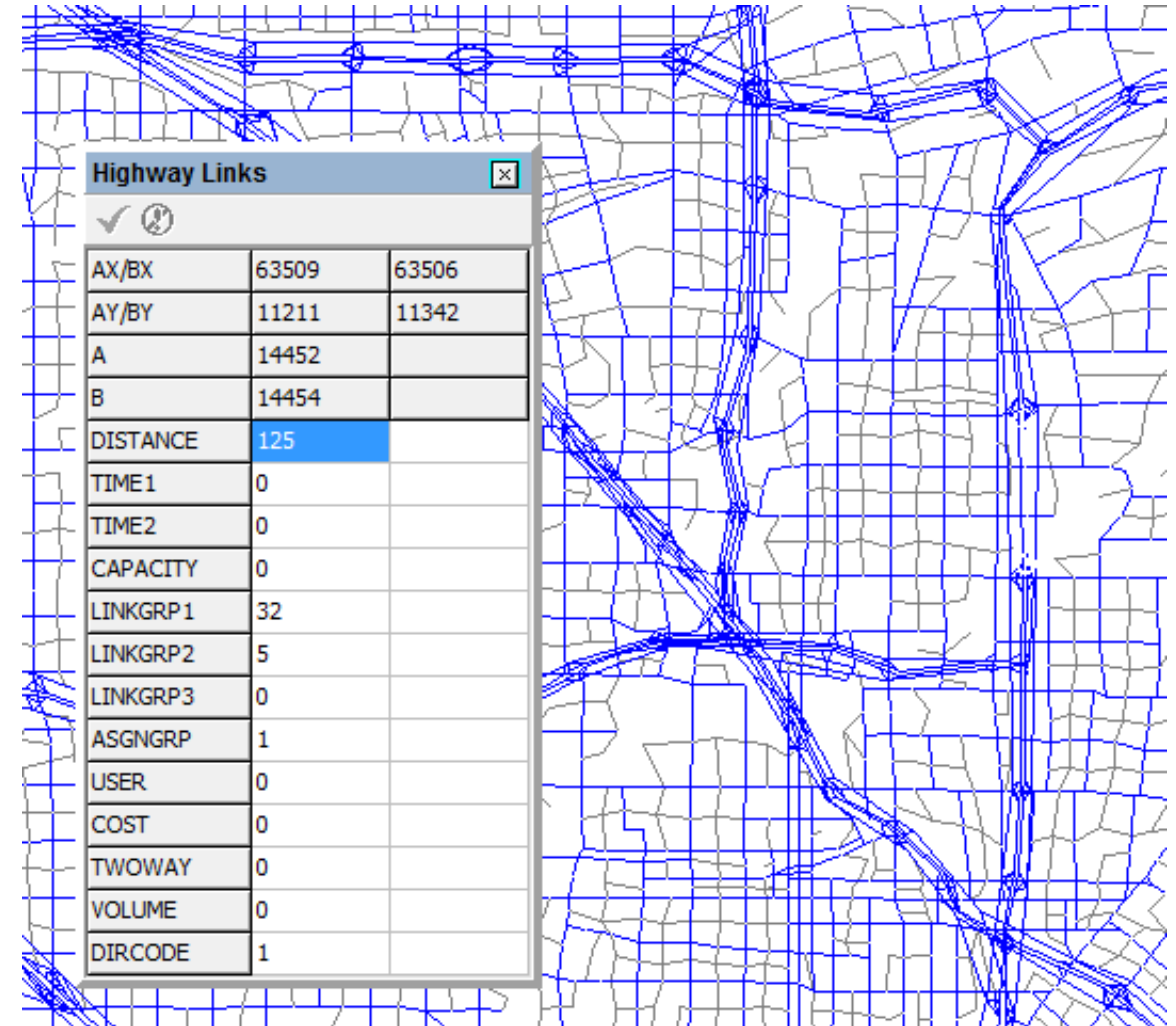
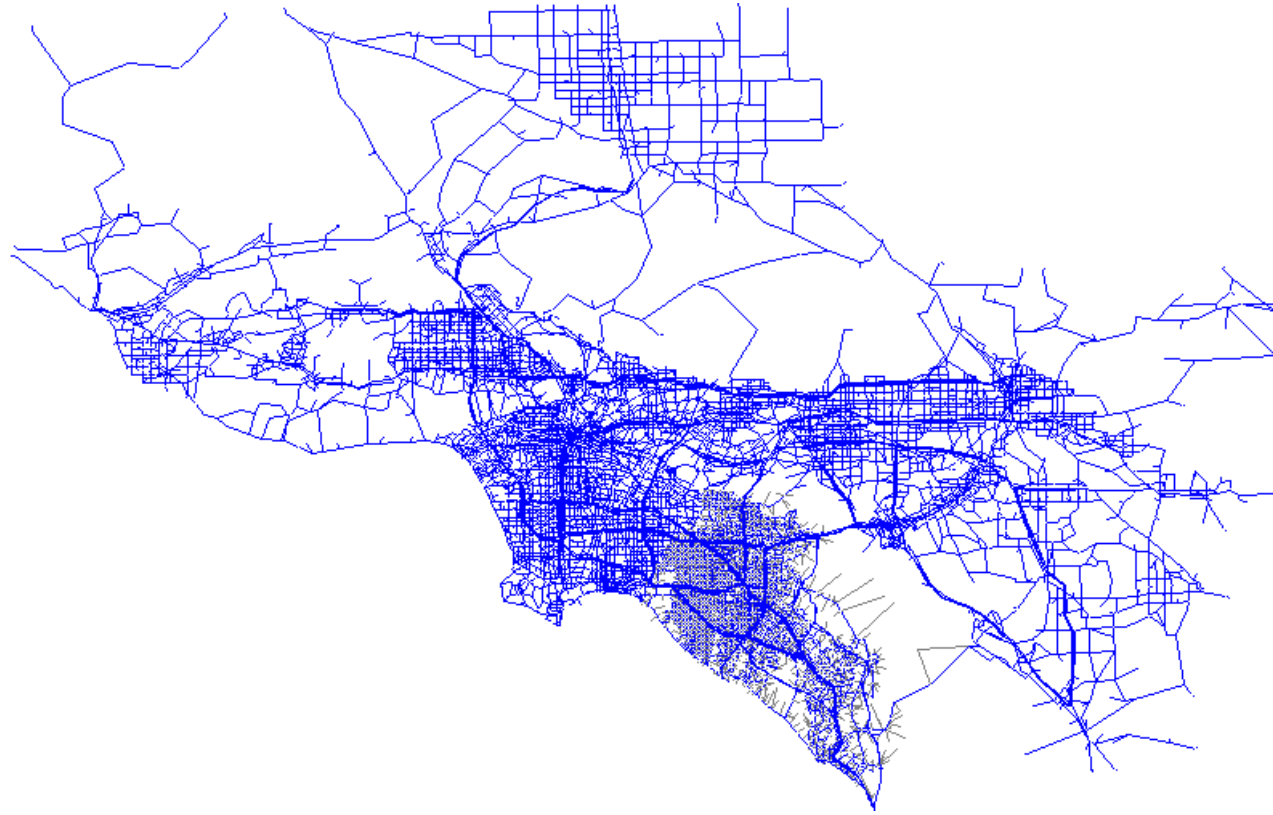
# Training Design

- #1 – Intro to OCTAM TRANPLAN 3.4
- #2 – Development of M3 Alternative
- #3 – Post Processing Model Outputs

# Intro to OCTAM – Model Inputs

- Highway Network
- Transit Network
- SED Input, etc.

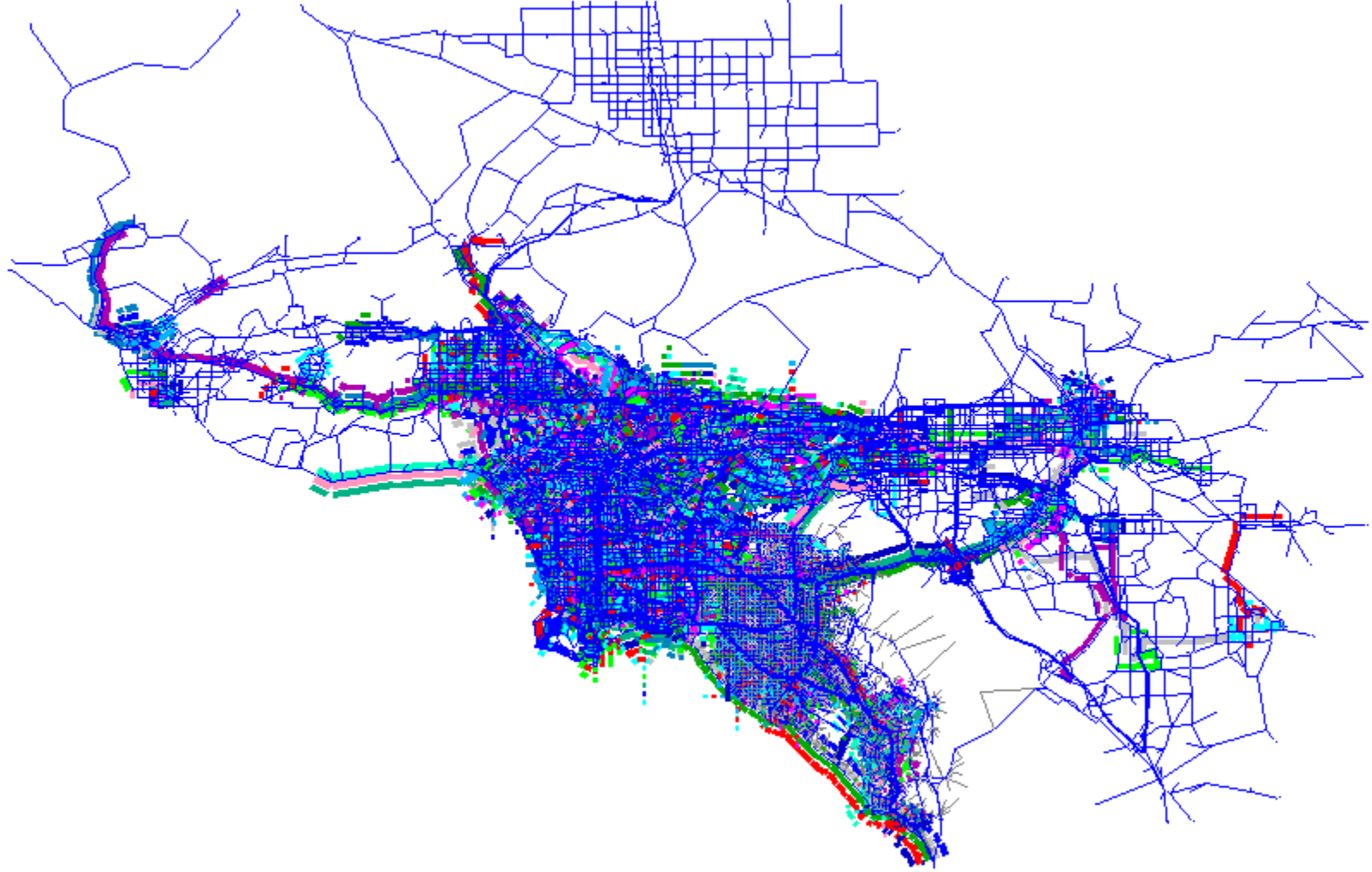
# Highway Network – under net\



# Highway Network

AsgnGrp	LinkGrp 3	LinkGrp 1	Description
0		Toll Facility	Toll facilities in Orange County
0	99	SJHTC	San Joaquin Hills Toll Facilities
1		Freeway	Limited access, divided, grade separated highway
2		Major	Six lane divided arterial highway
3		Primary	Four lane divided arterial highway
4		Secondary	Four lane undivided arterial highway
5		Commuter	Two lane undivided arterial highway
6		Smart Street	Six or Eight lane divided with traffic operational enhancements
7	67	HOV 2 Facility	Limited access carpool lanes for 2 person carpool
7	68	HOV 3+ Facility	Limited access carpool lanes for 3 or more person carpool
8		Freeway-to-freeway Connector or Freeway Ramp	One way ramp connectors
9		Centroid Connector	Zonal access/egress

# Transit Network – under trn\



# Transit Network

Mode	Transit Mode
10	Commuter rail (Metrolink)
11	Other express routes
12	Local routes in San Bernardino, Riverside and Ventura Counties
13	LACMTA local routes
14	LACMTA Metro express routes
15	OCTA local routes
16	OCTA express routes
17	Non LACMTA local routes in Los Angeles County
18	LACMTA rail transit - Blue Line/Red Line/Green Line/Purple Line/Gold Line
19	LACMTA Orange Line
20	High Speed Rail



# Land Use Inputs – under gen\

	0	10	20	30	40	50	60	70	80	90	100	110	120	130	140	1				
1	2019	2010	963	9	545	74	619	3.25	153	141	216	510	59087	487	0	181	0	62742	12317	2
2	2614	2588	1057	26	648	207	855	3.03	289	103	205	597	54906	0	0	243	0	62812	12313	2
3	2048	2048	953	0	438	304	742	2.76	87	320	206	613	36501	396	0	183	0	62877	12295	2
4	3117	3117	1465	0	485	484	969	3.22	319	207	294	820	46899	368	0	208	0	62924	12296	2
5	1503	1503	688	0	414	89	503	2.99	29	97	165	291	72067	0	0	145	0	62980	12296	2
6	1428	1403	668	25	431	22	453	3.1	15	39	154	208	81662	472	0	167	0	63023	12296	2
7	2017	2005	1039	12	495	166	661	3.03	240	144	165	549	48463	674	0	174	0	62731	12246	2
8	2215	2130	939	85	219	465	684	3.11	390	321	218	929	37455	384	0	170	0	62778	12243	2
9	773	773	347	0	122	89	211	3.66	5	133	256	394	40872	2607	0	80	0	62820	12251	2
10	4023	4023	2064	0	550	456	1006	4	118	162	788	1068	50109	0	0	217	0	62892	12226	2
11	3802	3792	1877	10	502	544	1046	3.63	122	53	255	430	45626	770	0	160	0	62971	12239	2
12	1949	1949	891	0	607	20	627	3.11	36	29	100	165	69440	0	0	160	0	63020	12230	2
13	5722	5709	2662	13	679	763	1442	3.96	141	248	299	688	37380	225	0	216	0	62822	12229	2
14	2370	2370	974	0	336	243	579	4.09	178	246	302	726	31157	870	0	126	0	62929	12194	2
15	1200	1200	506	0	288	116	404	2.97	77	33	82	192	41476	0	0	79	0	62728	12203	2
16	1640	1457	909	183	185	320	505	2.89	12	111	47	170	34834	0	0	81	0	62779	12200	2
17	1682	1677	723	5	261	155	416	4.03	27	231	431	689	45973	2029	0	132	0	62970	12191	2
18	1956	1956	783	0	100	816	916	2.14	124	222	834	1180	39280	0	0	160	0	63018	12189	2
19	1145	1145	570	0	305	45	350	3.27	0	8	28	36	50784	0	0	75	0	62727	12187	2
20	1238	1238	622	0	134	365	499	2.48	43	89	182	314	51944	0	0	78	0	62779	12181	2
21	2912	2912	1249	0	160	730	890	3.27	4	28	280	312	33156	0	0	117	0	62821	12185	2
22	1065	1065	512	0	165	70	235	4.53	164	221	1191	1576	44975	0	0	189	0	62889	12175	2
23	1810	1810	1069	0	0	578	578	3.13	1151	1452	2442	5045	35355	0	0	215	0	62930	12136	2
24	1727	1727	1016	0	0	555	555	3.11	392	856	2657	3905	44659	0	0	165	0	62972	12148	2
25	1457	1451	717	6	464	2	466	3.11	38	320	0	358	65316	454	0	156	0	62726	12148	2
26	2810	2810	1605	0	133	1100	1233	2.28	41	39	76	156	45392	0	0	117	0	62776	12140	2
27	3805	3800	2052	5	327	1050	1377	2.76	25	7	422	454	45471	0	0	155	0	62819	12138	2
28	2122	2122	833	0	394	73	467	4.54	78	622	536	1236	39813	483	0	139	0	62854	12136	2
29	0	0	0	0	0	0	0	0	41	277	1089	1407	0	0	0	82	0	63022	12127	2
30	0	0	0	0	0	0	0	0	625	33	94	752	0	0	0	44	0	62785	12125	2
31	2821	2821	1404	0	552	377	929	3.04	273	115	1393	1781	93987	0	0	512	0	62758	12078	2
32	2407	2402	1152	5	733	78	811	2.96	235	86	121	442	74103	1416	0	333	0	62830	12078	2

# Land Use

Variable	Format	Column	Description
Zone Number	I4	1-4	OCTAM 3 Zone Number
Total Population	I7	5-11	Total Population
Population in Households	I7	12-18	Population Living in Households
Employed Population	I7	19-25	Employed Residents
Group Population	I7	26-32	Population Residing in Group Housing
Single Family Households	I7	33-39	Number of Single Family Households
Multi-Family Households	I7	40-46	Number of Non-Single Family Households
Total Households	I7	47-53	Total Number of Households
Household Size	F7.2	54-60	Average Household Size
Retail Employment	I7	61-67	Retail Employment (SIC Codes 52-59)
Service Employment	I7	68-74	Service Employment (SIC Codes 59-96)
Basic Employment	I7	75-81	Basic Employment (SIC Codes 1-51)
Total Employment	I7	82-88	Total Employment
Median Income	I7	89-95	Median Household Income
Elementary & High School Enrollment	I7	96-102	Enrollment in Elementary and High Schools (at the schools, not in households)
College/University Enrollment	I7	103-109	Enrollment in Colleges or University (at the schools, not in households)
Area	I7	110-116	Area in Acres
Autos	I7	117-123	Number of Autos (not required if auto ownership choice model option is used)
X-Centroid	I7	124-130	X-Coordinates of Zone Centroid in 100s of Feet (not used in this version)
Y-Centroid	I7	131-137	Y-Coordinates of Zone Centroid in 100s of Feet (not used in this version)
County	I7	138-144	County (1=LA, 2=OR, 3=RV, 4=SB, 5=VN)

# Model Functions

- Trip Generation
- Trip Destination
- Mode Choice
- Trip Assignment

 dist gen mc mrun net trn

Run batch files under DOS environment.

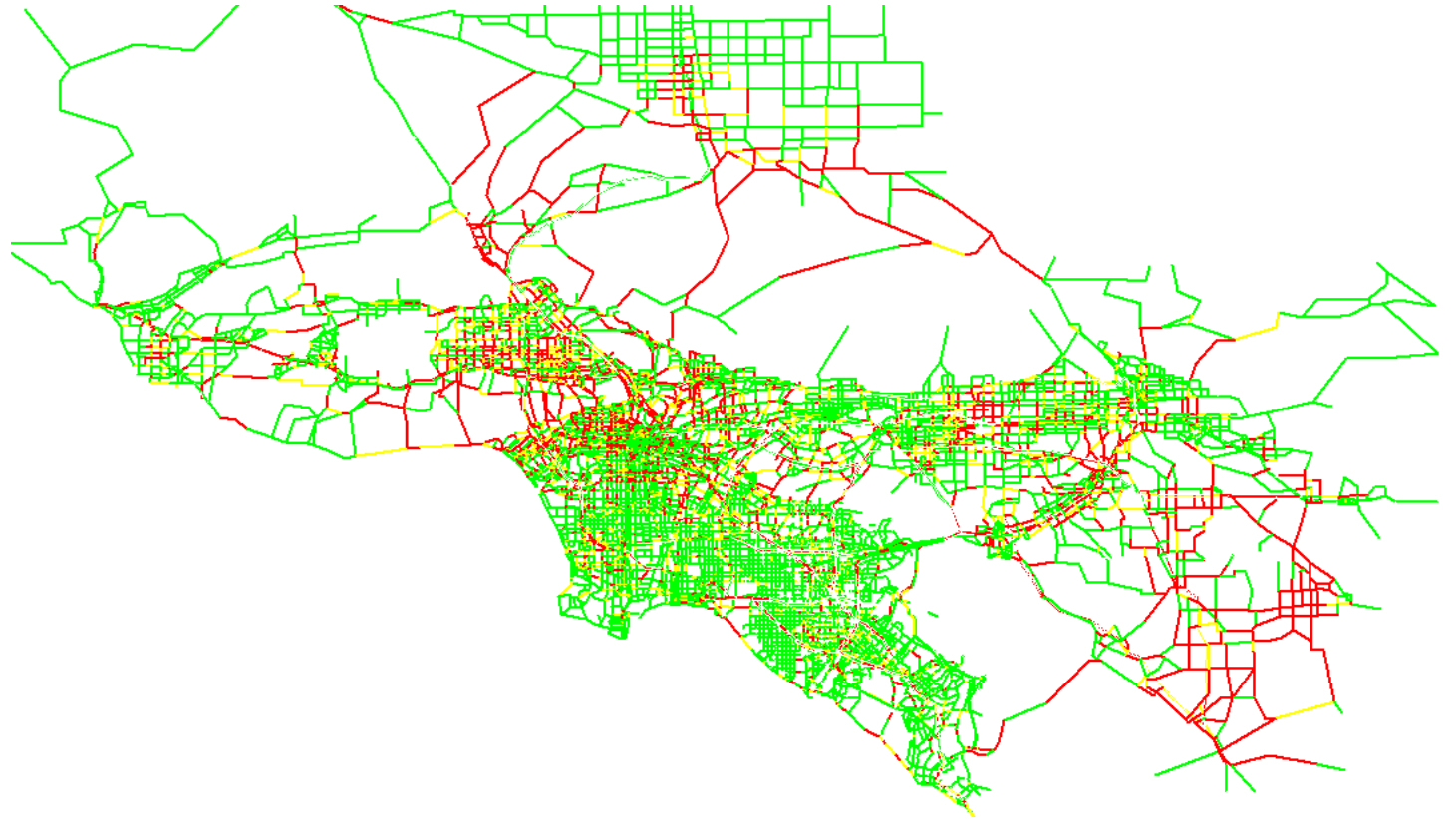
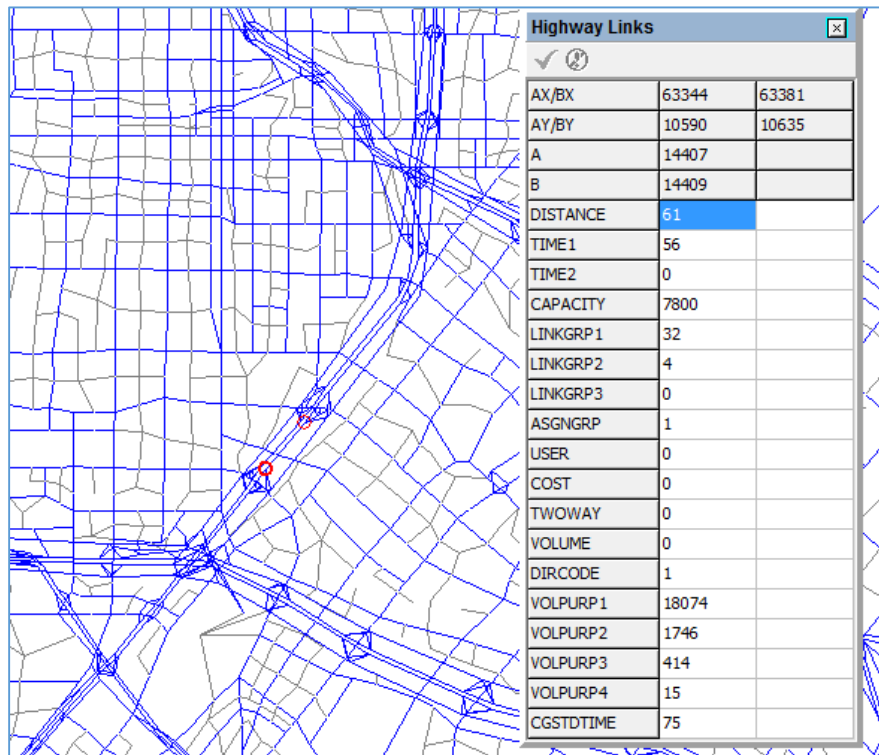
# Model Outputs

- Trip Table

Table No.	Highway Trip Mode
1	Drive alone free
2	Drive alone toll
3	Shared ride 2+ free
4	Shared ride 2+ toll

Primary Mode	Transit Trip Table No.	
	Drive Acc	Walk Acc
Express bus	1	5
Urban rail	2	6
Commuter rail	3	7
Local bus	4	8
Non-Motorized	9	

# Loaded Network – under mrun\



Now let's take a look at the model folder...