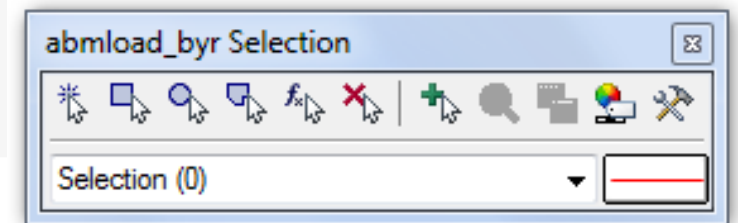




Create Selection Sets

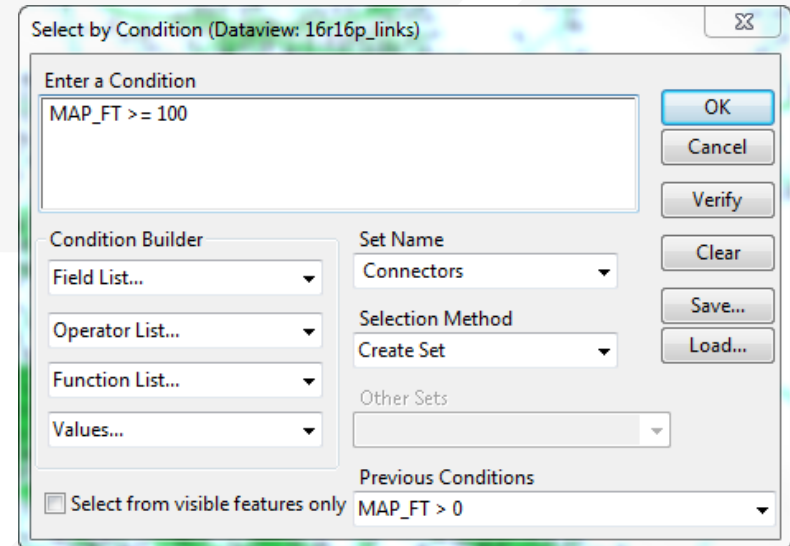
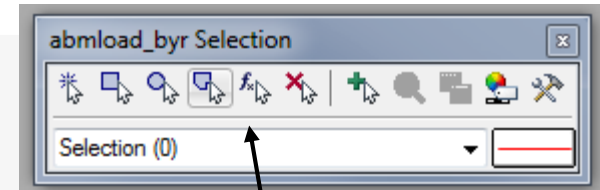
Selection Sets

- Add additional formatting capability
- Useful for analysis and data processing
- Use the Selection Set Toolbox
 - » Select items with a query
 - » Select items by pointing
 - » View the Selection Settings
- One map can contain many selection sets
 - » Show or hide selected items
 - » Format selected items with different colors, styles, and labels



Practice 3: Create selection sets and color and label them

- Start with the results from Practice 2
- ✓ Open the saved map if needed
1. Goto Tools and select 'Selection' or hit F9
 - ✓ This will show the selection toolbox shown to the right
 - ✓ Click select by condition () to open the query builder
 - ✓ Type in condition: MAP_FT >= 100
 - ✓ Type the Set Name (Connectors)
 2. Change the centroid connector lane labels
 - ✓ Open selection settings (Selection → Settings or )
 - ✓ Choose Connectors, then click Style
 - ✓ Set the color to "default gray) – this allows the color theme to override
 - ✓ Click Labels
 - ✓ Set the label to a smaller font size and different color
 - ✓ Close the selection settings
- ✓ **TIP:** You can make other changes to multiple different selection sets, or can hide some features altogether!



In training, save the map for future use